

Global Vista Oil Mix



Spare Parts

Global Vista
Oil Mix

WR000670 REV. 2.0





Product Liability

For the supplier's product liability to be valid, no alterations, additions or the like may be made to the equipment without the supplier's express permission.
Use only genuine parts



Produktansvar

För att en leverantörs produkt ansvar skall gälla får ändringar, kompletteringar och liknande ej göras i utrustningen utan leverantörens godkännande.
Originalreservdelar skall alltid användas.



Produkthaftung

Damit die Produkthaftung des Lieferanten ihre Gültigkeit behält, dürfen ohne ausdrückliche Genehmigung des Lieferanten keine Änderungen, Ergänzungen o. Ä. an der Ausrüstung vorgenommen werden.
Verwenden Sie nur Originalteile.



Ответственность поставщика

Для сохранения ответственности нельзя вводить в оборудование изменения, дополнения и т.п. без разрешения поставщика.
Пользуйтесь только оригинальными запасными частями, выпущенным изготовителем бензоколонки.

Caution

To prevent damage that might result in electric shock or fire, disconnect the main power prior to any work.

Varning

Gör pumpen/enheten strömlös innan Du gör ingrepp i den. I annat fall föreligger risk för skada.

Vorsicht

Um Beschädigungen zu vermeiden, die zu einem elektrischen Schlag oder Feuer führen können, unterbrechen Sie vor jeder Arbeit die Stromzufuhr.

Осторожно

Во избежание поражения электрическим током или пожара отключайте напряжение питания перед началом любых работ.

Warning

Never run a leaking pump!
Be careful with the environment and mind the skidding risk; take care of leaking fuel immediately.

Varning

Använd aldrig en läckande pump.
Tänk på miljön och halkrisken, sanera utläckt drivmedel snarast.

Warnung

Lassen Sie nie eine undichte Zapfsäule laufen! Seien Sie umweltbewusst und denken Sie an die Rutschgefahr; beseitigen Sie austretenden Kraftstoff umgehend.

Предупреждение

Не пользуйтесь колонкой при наличии утечки топлива!
Охраняйте окружающую среду, помните об опасности скольжения: в случае утечки топлива на дорожное покрытие возле колонки, примите меры немедленно.



The contents of this publication may not be copied either wholly or in part without the consent of Dresser Wayne.

Dresser Wayne reserves the right to change specifications contained in the text and illustrations without notice.

Innehållet i denna publikation får ej helt eller delvis kopieras utan medgi van de från Dresser Wayne.

Dresser Wayne förbehåller sig rätten att utan särskilt meddelande ändra specifikationer givna i text och bild.

Der Inhalt dieses Handbuchs darf ohne die Erlaubnis von Dresser Wayne weder ganz noch teilweise kopiert werden.

Dresser Wayne behält sich das Recht vor, textliche oder bildliche Inhalte ohne besondere Mitteilung zu ändern.

© Copyright


е разрешается копировать полностью или частично содержание настоящей публикации без разрешения фирмы Dresser Wayne.


Dresser Wayne оставляет за собой право вносить изменения в спецификации, содержащиеся в тексте и иллюстрациях, без предварительного уведомления.

1 Service and maintenance

1.1 Separation of power supply

Separation is done by removing the main fuse of the pump on the station.


<p>WARNING!</p> <p>To prevent damage which may result in electric shock or fire, disconnect the main power prior to any work.</p>
<p>CAUTION!</p> <p>Unauthorised personnel may not execute service and maintenance. This may cause personal injury or property damage.</p>
<p>CAUTION!</p> <p>Avoid the heat element of the electronics head, risk of skin burn.</p>


<p>WARNING!</p> <p>Mind the rotating V-belt when the cover of the hydraulic unit is removed!</p>
<p>WARNING!</p> <p>The driving belt may be replaced only by original belt from Dresser Wayne, otherwise there is a risk of explosion.</p>
<p>WARNING!</p> <p>Use your protective equipment. (Protective mask, gloves etc.)</p>

1.2 Electrostatic discharge (ESD)

Before service/maintenance of a pump discharging must be done. This is done when you open the covers of the pump with a key.

If an extensive repair work is to be done, discharge should be done regularly by touching the key.


<p>WARNING!</p> <p>The key must have direct contact with the skin.</p>

<p>NOTE!</p> <p>Avoid direct contact with electronic parts of the pump.</p>
--

2 What does the denomination of the pump indicate

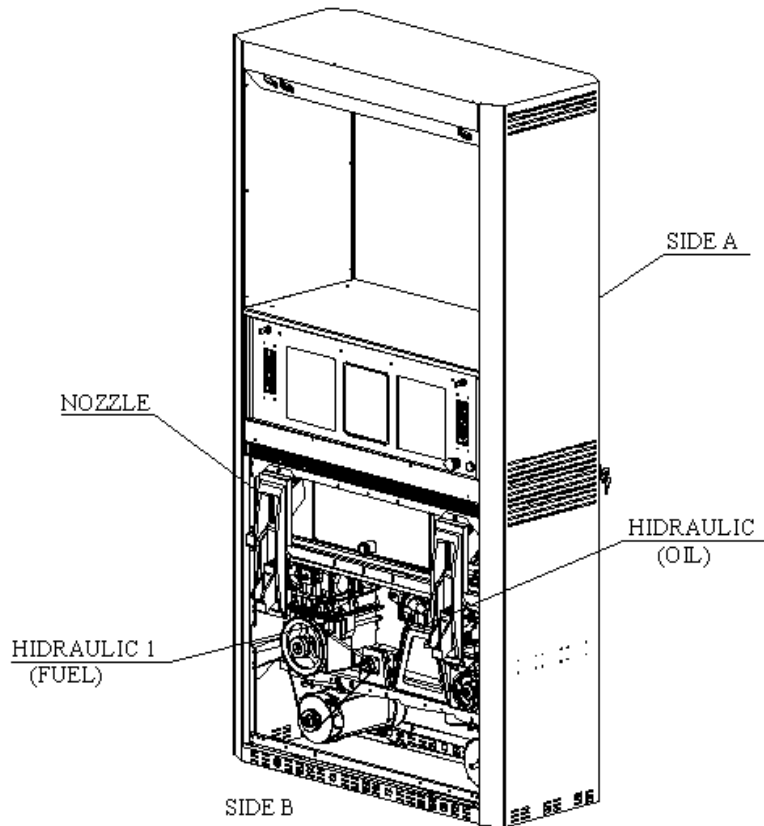


Figure 1 – Model 3 / G3394PO

3/G33XYZO

- Oil Mix
- P = Pump (hydraulic pressure pump)
D = Dispenser (remote hydraulic pump)
- 1 = Simple, oriented to the island
4 = Dual Twin, oriented to the lane
7 = Twin, oriented to the lane
9 = Quadro, oriented to the lane
- 8 = Narrow
9 = Wide

Serial number

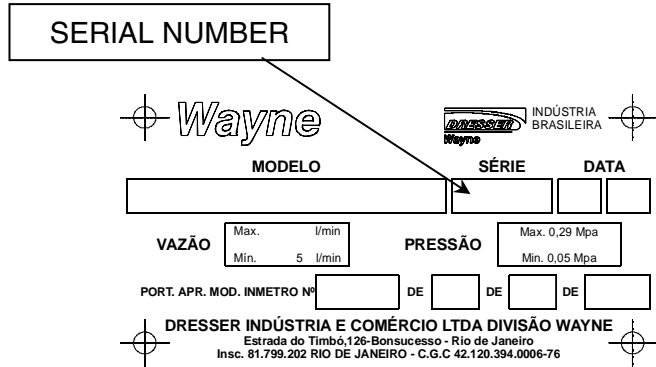
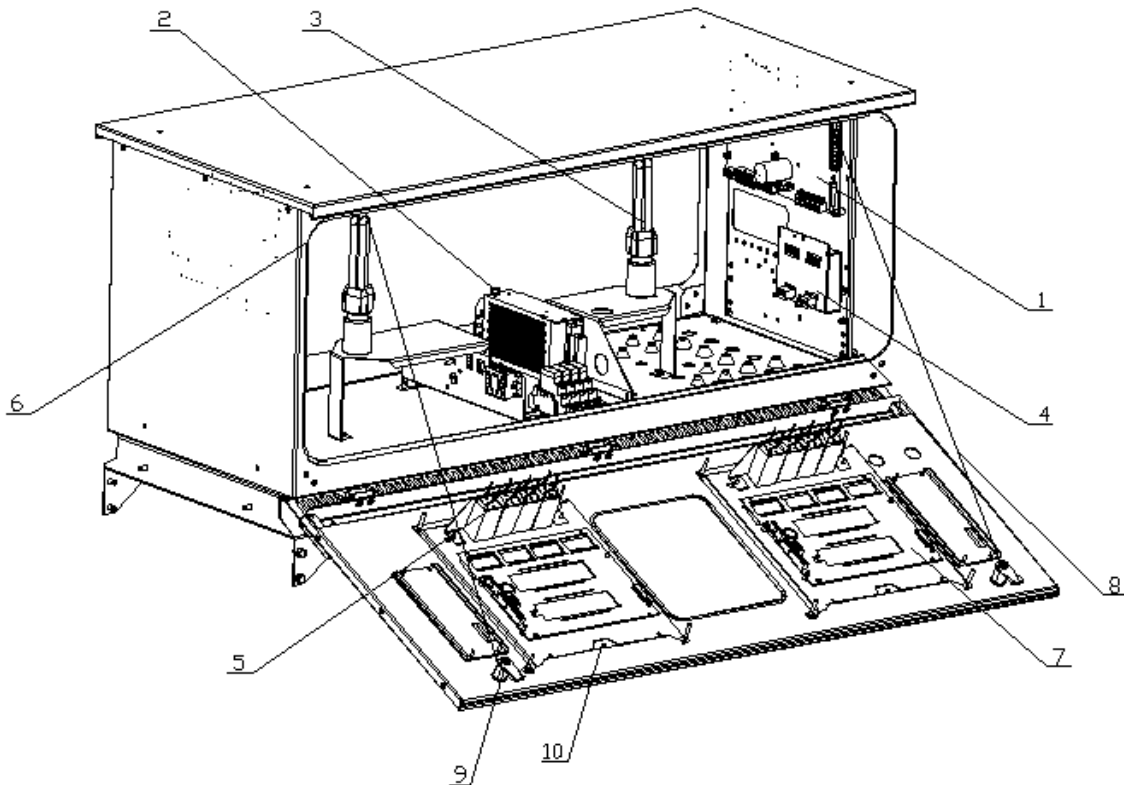


Figure 2 Marking sign

3 Contents

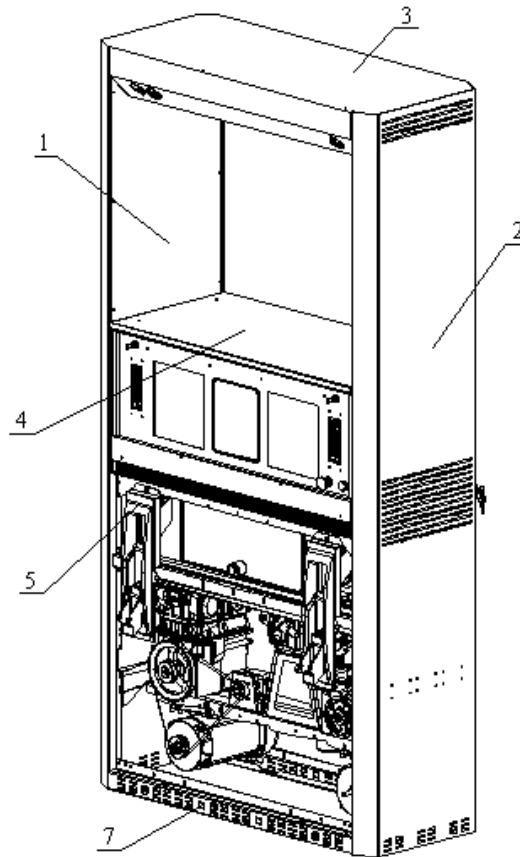
1	Service and maintenance	3
1.1	Separation of power supply	3
1.2	Electrostatic discharge (ESD)	3
2	What does the denomination of the pump indicate	4
	Serial number	5
3	Contents	6
4	Electronic Head	7
5	Framework	8
6	Tubes	9
6.1	Air venting	9
6.2	Hoses	9
7	Hydraulic Modules	10
7.1	3/G3381PO	10
7.2	3/G3381DO	12
7.3	3G3387PO	14
7.4	3G3387DO	16
7.5	3G3394PO / 3G3399PO	18
7.6	3G3394DO / 3G3399DO	20
7.7	Oil Pump	22
8	Nozzle	22
8.1	Cover	22
8.2	Nozzle	23
9	Motor	24
10	Oil Tank Module	25
11	Cables List	26
12	Market & Service	27
13	Notes	28

4 Electronic Head



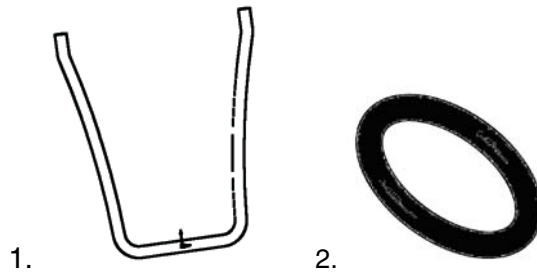
	Part number	Description
1	WM1908-0001	CPU Board
2	WM009864	Power supply 150W
3	1-921514	Lamp
	2-921515	Lamp holder
4	WM002450	Intrinsic safe barrier (ISB)
5	1-306155	Electromechanical totalizers
	1-306156	Electromechanical totalizers
6	4306677	Edge protector
7	WM10888-0001	Display board double row
	WM10887-0001	
8		Front panel
	BA9515	Function keyboard
	WM014176-0003	Function keyboard right (3/G2201PO/DO)
	W7000365	Glass (aprox. 258x278)
	BA9442	Gasket
9		Lock
	BWM001994-0002	Std
	WT000375	Latch bezel
10	WT000367	Support, box-shape, display, functional keyboard
	1-305374	Gasket (aprox. 190x74)
	BA9888	Key pad, 5 buttons
	1-305399	Hinge, male
	1-305398	Hinge, female

5 Framework



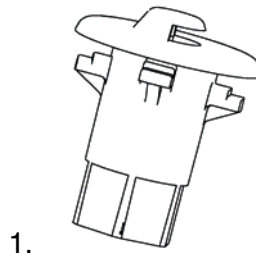
	Part number	Description
1	WT328	Side panel
2		Column
	BA9516	Column , without holder holes (3/G3381PO/DO,3/G3387PO/DO,3/G3394PO/DO,3/G3397PO/DO)
	BA9517	Column , with holder holes (3/G3387PO/DO,3/G3394PO/DO,3/G3397PO/DO)
	BA9552	Column , with holder holes (3/G3381PO/DO)
3	WT000374-0003	Top panel
4	BA8964	Electronic head cover
5		Door
	BA9514	Door (3/G3394PO/DO)
	BA9546	Door (3/G3397PO/DO, 3/G3381PO/DO)
	BB1137	Door (3/G3387PO/DO)
6		Nozzle boot
	11-306362	Lift-to-start (3/G3387PO/DO,3/G3394PO/DO,3/G3397PO/DO)
	3-306362	Lift-to-start (3/G3381PO/DO)
7		Base, hydraulics
	1306634	Base, hydraulics (3/G3381PO,3/G3387PO)
	2306634	Base, hydraulics (3/G3381PO/DO,3/G3387PO/DO)
	3306634	Base, hydraulics (3/G3394PO,3/G3397PO)
	4306634	Base, hydraulics (3/G3394PO/DO,3/G3397PO/DO)

6 Tubes



	Part number	Description
1	3-301748	Lock pin for tube fitting
2	1-921130	O-ring – t = 5.33 mm, ØI = 21.59 (for “double bump” tube connection)

6.1 Air venting



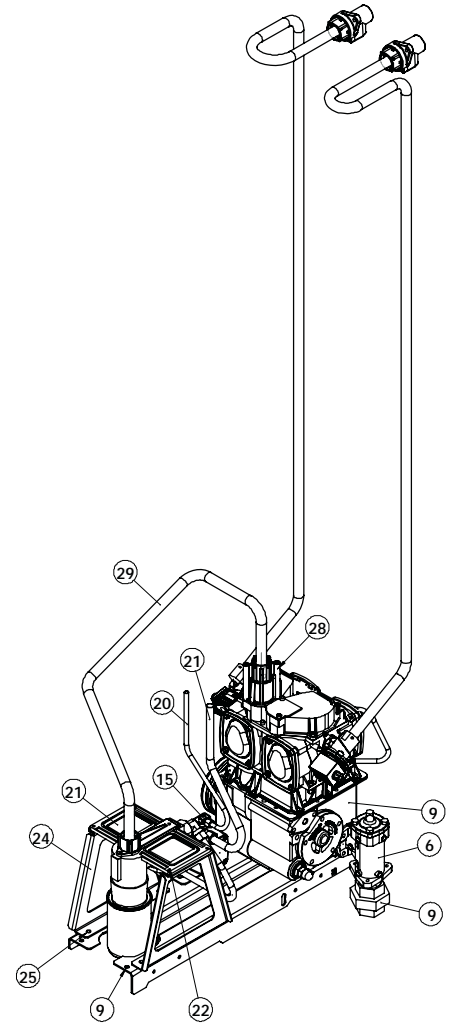
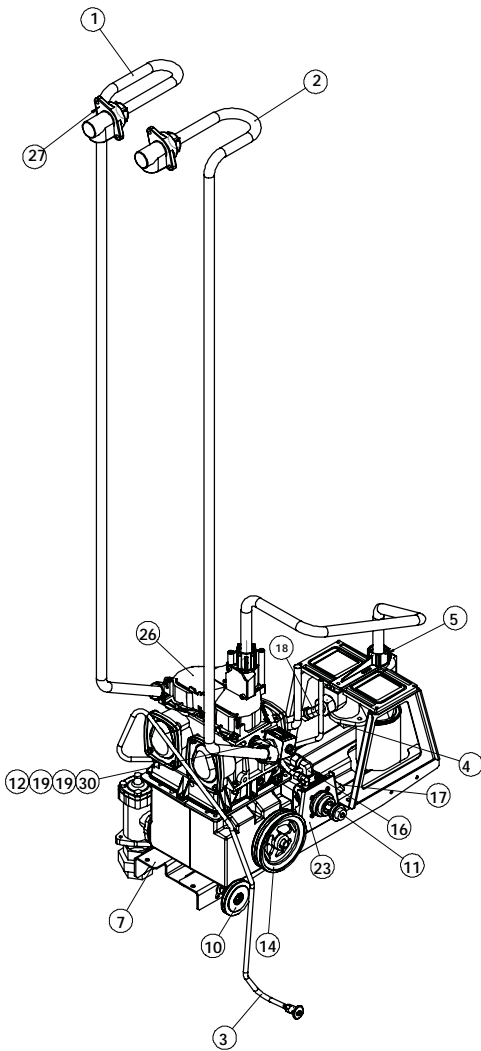
	Part number	Description
1	WM0011354	Plug for air venting
2	154288	Strainer for air venting

6.2 Hoses

	Part number	Description
	160200434005B	ID = 16 mm, L = 4.9 m, black
	160200434005G	ID = 16 mm, L = 4.9 m, green
	160200434005Y	ID = 16 mm, L = 4.9 m, yellow

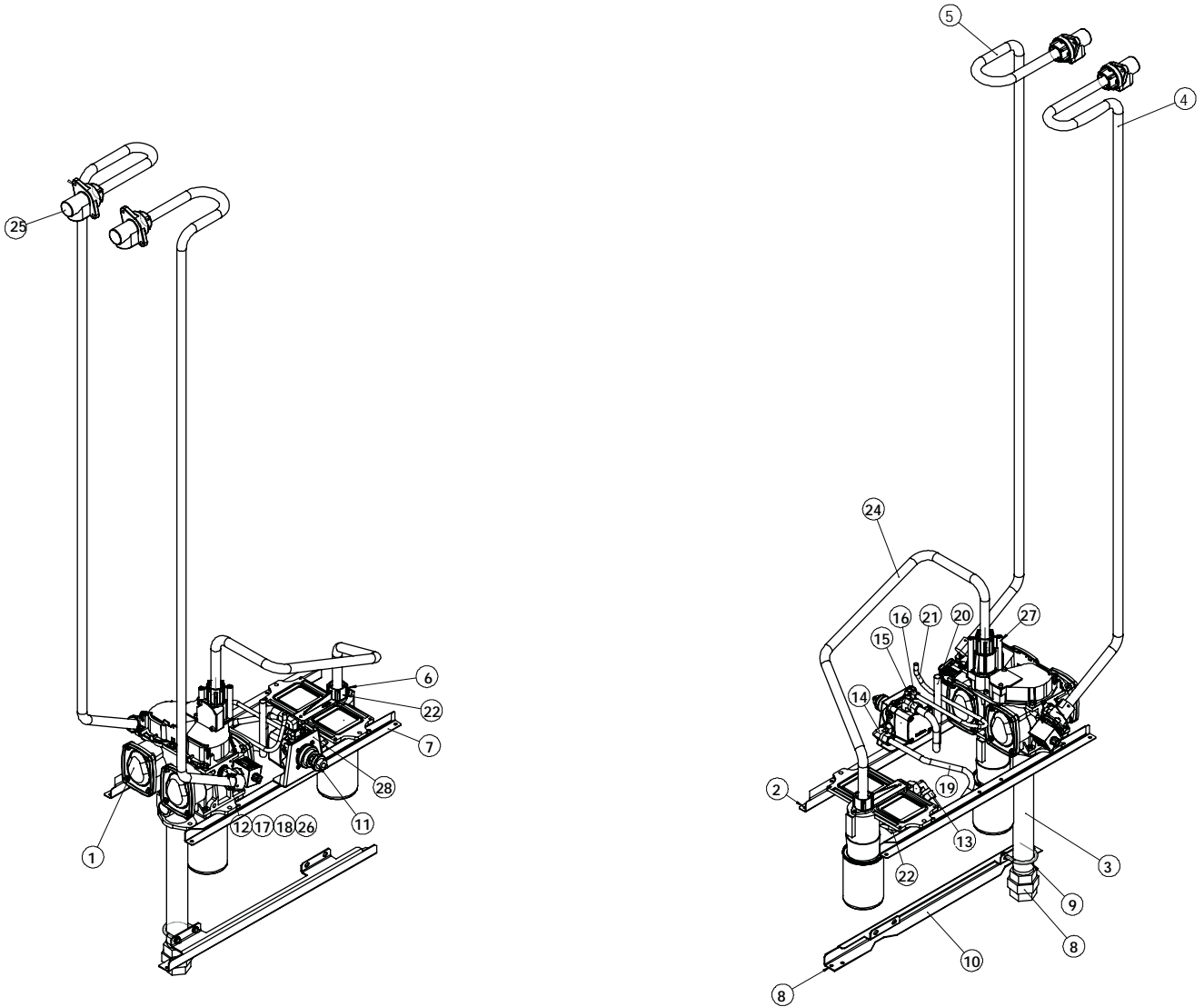
7 Hydraulic Modules

7.1 3/G3381PO



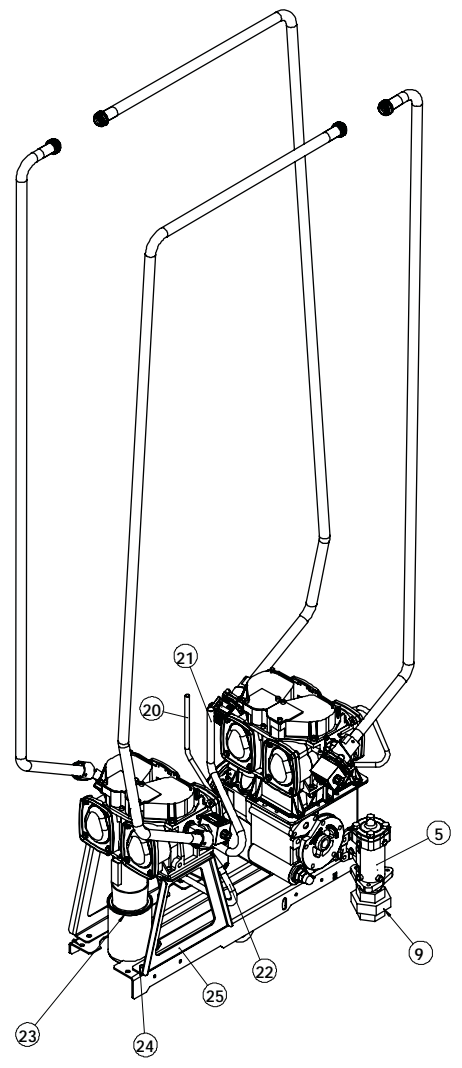
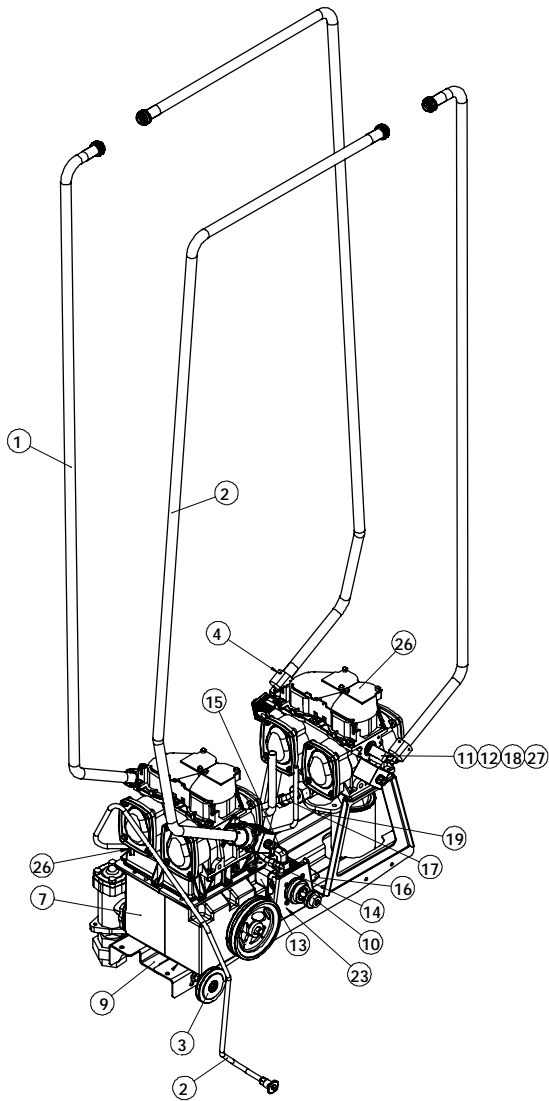
	Part number	Description
1	BB1583	Fuel discharge tube
2	BB1213	Oil discharge tube
3	BA9533	Vent tube
4	BA9688	Plug
5	3301748	Lockpin
6	B201829	Filter
7	B1155	Platform
8	B4047919N	Compact pump unit
9	512101	Union
10	BA9698	Stretcher
11	WM16934	Oil pump pulley
12	BA9500	Solenoid valve adapter
13	BA9501	Discharge tube adapter
14	BA9744	Belt
15	BA9680	Male elbow
16	BA9681	Male elbow
17	BA9682	Male elbow
18	BA9681	Male elbow
19	BA9686	Male elbow
20	BB1587	Oil pump return tube
21	BB1589	Suction tube
22	BB1592	Pressure tube
23	BA9489	Oil pump support
24	BA9505	iMeter support
25	BB1009	Filter
	1300967	Filter element
26	12305222	iMeter
27	WR3410001	Discharge outlet
28	B1305466	Check valve assy/ Meter inlet
29	BB1586	Inter-meters tube
30	WM17009	Oil Solenoid valve
31	1305012	Pump connection

7.2 3/G3381DO



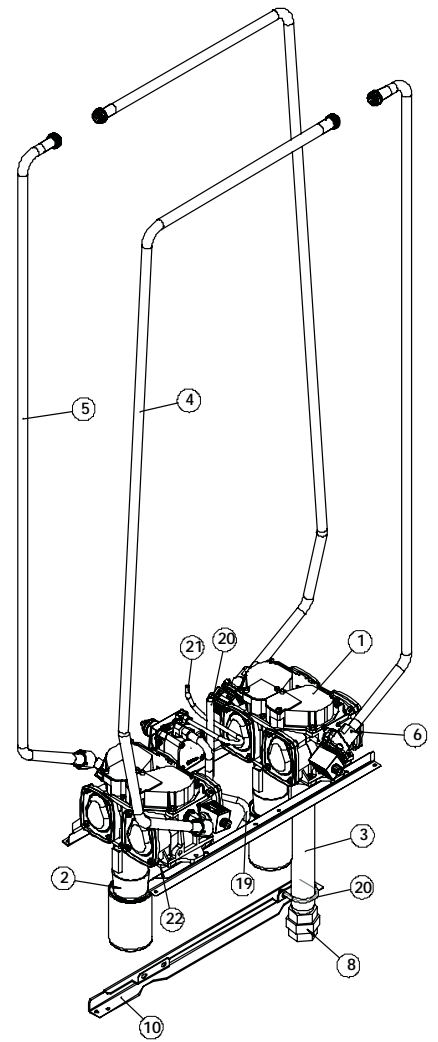
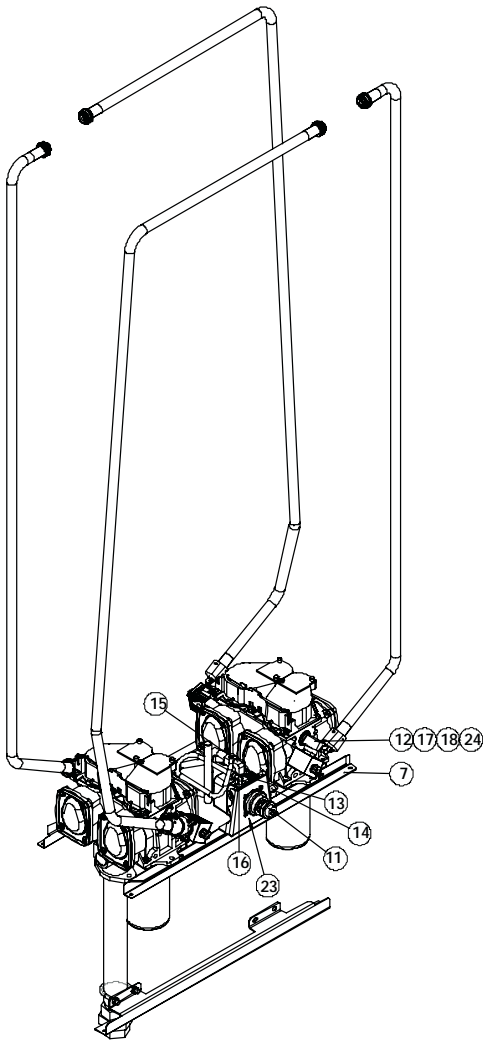
	Part number	Description
1	B5305222	iMeter
2	BB1009	Filter
	1300967	Filter element
3	BB1193	Inlet tube
4	BB1193	Fuel discharge tube
5	BB1213	Oil discharge tube,
6	3301748	Lockpin
7	BB1155	Platform
8	512101	Union
9	WR1960002	U-bolt
10	WT13270002	Nipple support
11	WM16934	Oil pump pulley
12	BA9686	Male elbow
13	BA9861	Male elbow
14	BA9682	Male elbow
15	BA9681	Male elbow
16	BA9680	Male elbow
17	BA9500	Solenoid valve adapter
18	BA9501	Discharge tube adapter
19	BB1592	Pressure tube
20	BB1590	Suction tube
21	BB1588	Oil pump return tube
22	BA9688	Plug
23	1305012	Pump connection
24	BB1586	Inter-meters tube
25	WR3410001	Discharge outlet
26	WM17009	Oil Solenoid valve
27	B1305466	Check valve assy/ Meter inlet
28	BA9498	Oil pump support

7.3 3G3387PO



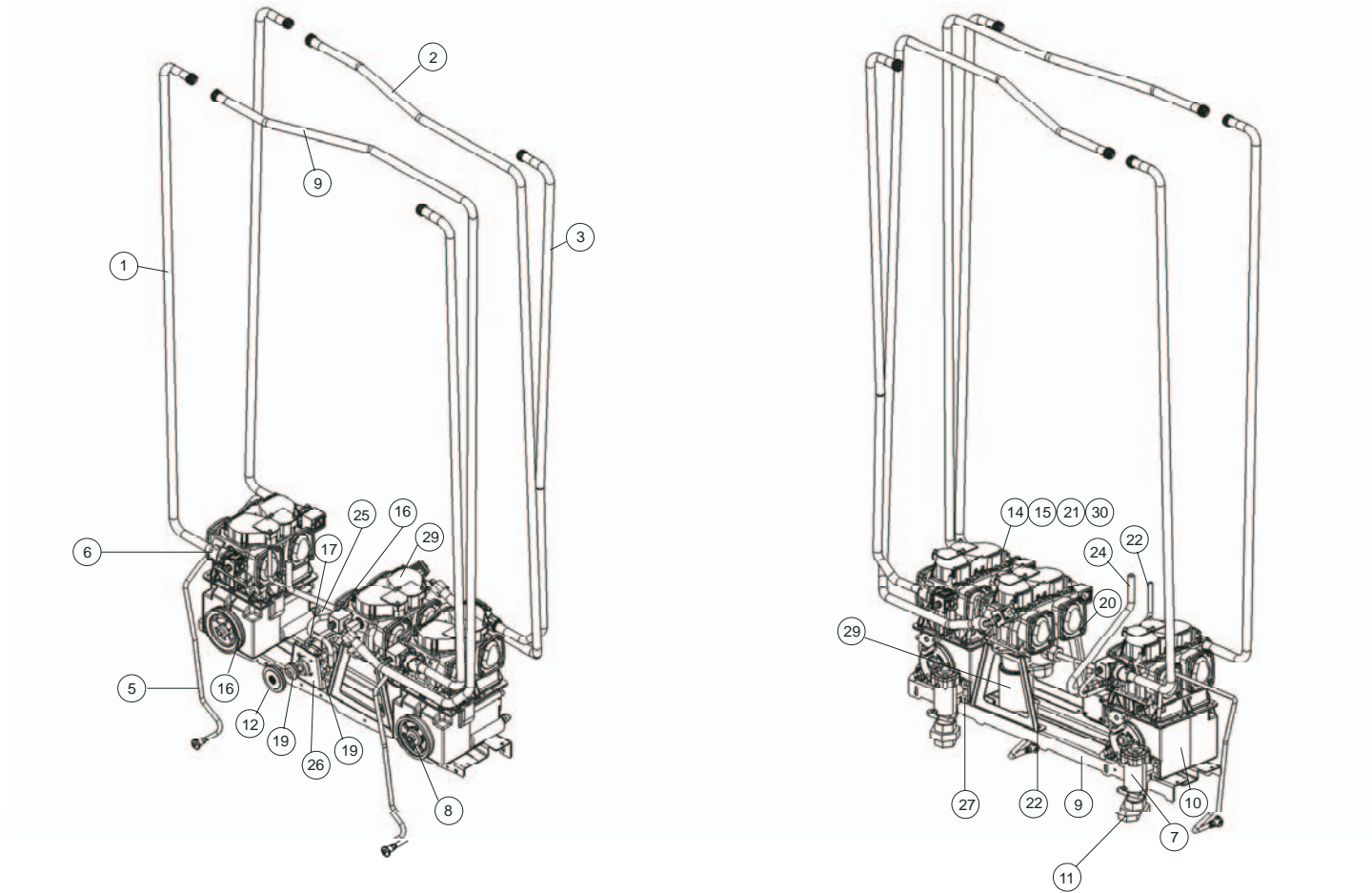
	Part number	Description
1	BB1585	Discharge tube
2	BA9530	Discharge tube
3	BA9533	Vent tube
4	3301748	Lockpin
5	B201829	Filter
6	B1155	Platform
7	B4047919N	Compact pump unit
8	512101	Union
9	BA9698	Stretcher
10	WM16934	Oil pump pulley
11	BA9500	Solenoid valve adapter
12	BA9501	Discharge tube adapter
13	BA9744	Belt
14	BA9680	Male elbow
15	BA9681	Male elbow
16	BA9682	Male elbow
17	BA9681	Male elbow
18	BA9686	Male elbow
19	BA9688	Plug
20	BB1587	Oil pump return tube
21	BB1589	Suction tube
22	BB1591	Pressure tube
23	BA9498	Oil pump support
24	BA9505	iMeter support
25	BB1009	Filter
	1300967	Filter element
27	13305222	iMeter
28	WM17009	Oil Solenoid valve

7.4 3G3387DO



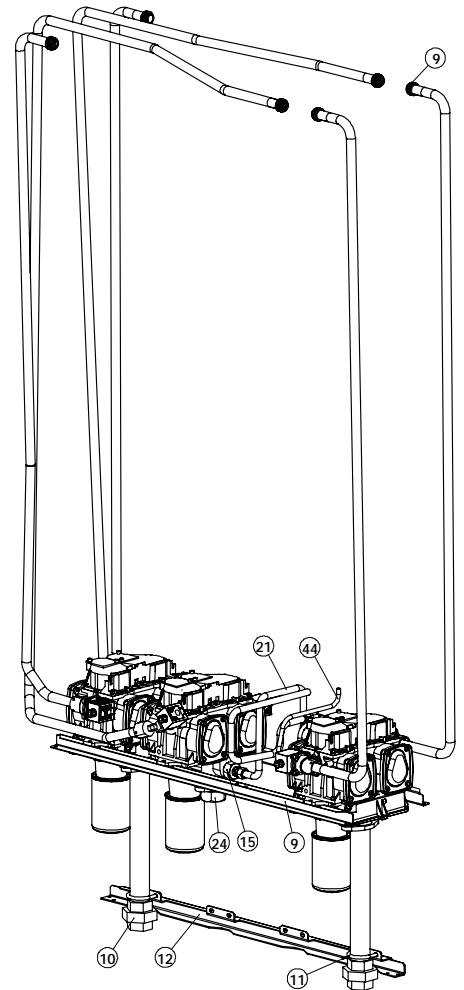
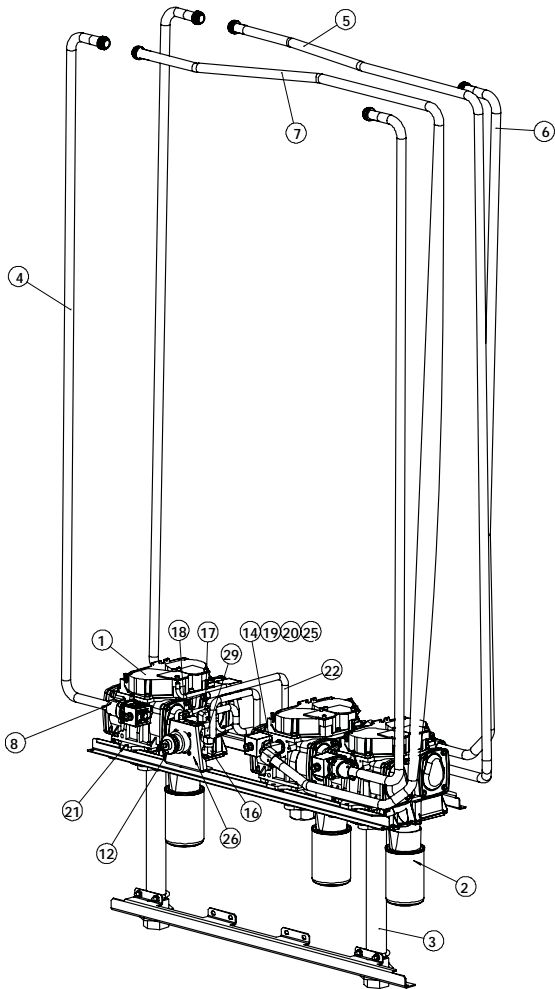
	Part number	Description
1	B5305222	iMeter
2	BB1009	Filter
	1300967	Filter element
3	BB1193	Inlet tube
4	BB1585	Discharge tube
5	BA9530	Discharge tube
6	3301748	Lockpin
7	BB1155	Platform
8	512101	Union
9	WR1960002	U-bolt
10	WT13270002	Nipple support
11	WM16934	Oil pump pulley
12	BA9686	Male elbow
13	BA9861	Male elbow
14	BA9682	Male elbow
15	BA9681	Male elbow
16	BA9680	Male elbow
17	BA9500	Solenoid valve adapter
18	BA9501	Discharge tube adapter
19	BB1592	Pressure tube
20	BB1590	Suction tube
21	BB1588	Oil pump return tube
22	BA9688	Plug
23	BA9498	Oil pump support
24	WM17009	Oil Solenoid valve

7.5 3G3394PO / 3G3399PO



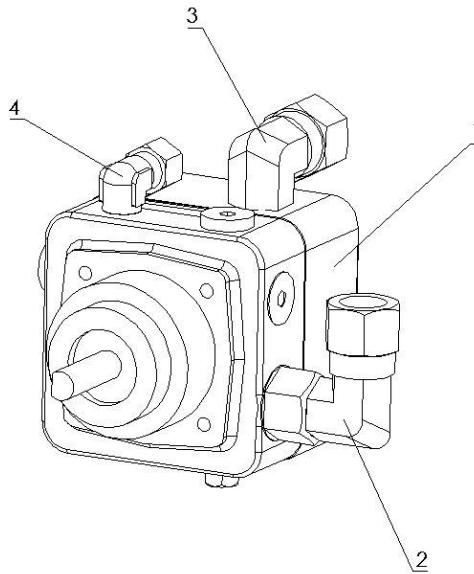
	Part number	Description
1	BB1581	Discharge tube
2	BB1582	Discharge tube
3	BA9529	Discharge tube
4	BA9531	Discharge tube
5	BA9533	Vent tube
6	3301748	Lockpin
7	B201829	Filter
8	1305112	Pulley
9	BA9503	Platform
10	B4047919N	Compact pump unit
11	512101	Union
12	BA9698	Stretcher
13	WM16934	Oil pump pulley
14	BA9500	Solenoid valve adapter
15	BA9501	Discharge tube adapter
16	BA9744	Belt
17	BA9680	Male elbow
18	BA9681	Male elbow
19	BA9682	Male elbow
20	BA9683	Male elbow
21	BA9686	Male elbow
22	BA9688	Plug
23	BA9534	Oil pump return tube
24	BA9535	Suction tube
25	BA9536	Pressure tube
26	BA9498	Oil pump support
27	BA9505	iMeter support
28	BB1009	Filter
	1300967	Filter element
29	13305222	iMeter
30	WM17009	Oil Solenoid valve

7.6 3G3394DO / 3G3399DO



	Part number	Description
1	B5305222	iMeter
2	BB1009	Filter
	1300967	Filter element
3	BB1193	Inlet tube
4	BB1581	Discharge tube
5	BB1582	Discharge tube
6	BA9529	Discharge tube
7	BA9531	Discharge tube
8	3301748	Lockpin
9	BA9607	Platform
10	512101	Union
11	WR1960002	U-bolt
12	WT13270001	Nipple support
13	WM16934	Oil pump pulley
14	BA9686	Male elbow
15	BA9683	Union
16	BA9682	Male elbow
17	BA9681	Male elbow
18	BA9680	Male elbow
19	BA9500	Solenoid valve adapter
20	BA9501	Discharge tube adapter
21	BA9536	Pressure tube
22	BA9535	Suction tube
23	BA9534	Oil pump return tube
24	BA9688	Plug
25	WM17009	Oil Solenoid valve
26	BA9498	Oil pump support

7.7 Oil Pump



	Part number	Description
1	WM16553	Oil pump
2	BA9682	Male elbow, pressure tube
3	BA9681	Male elbow, suction tube
4	BA9680	Male elbow, return tube

8 Nozzle

8.1 Cover



	Part number	Description
		Nozzle cover without VR
	BA85745	Black
	BA85744	Blue
	BA8574	Green
	BA85743	Red
	BA85742	Yellow

8.2 Nozzle



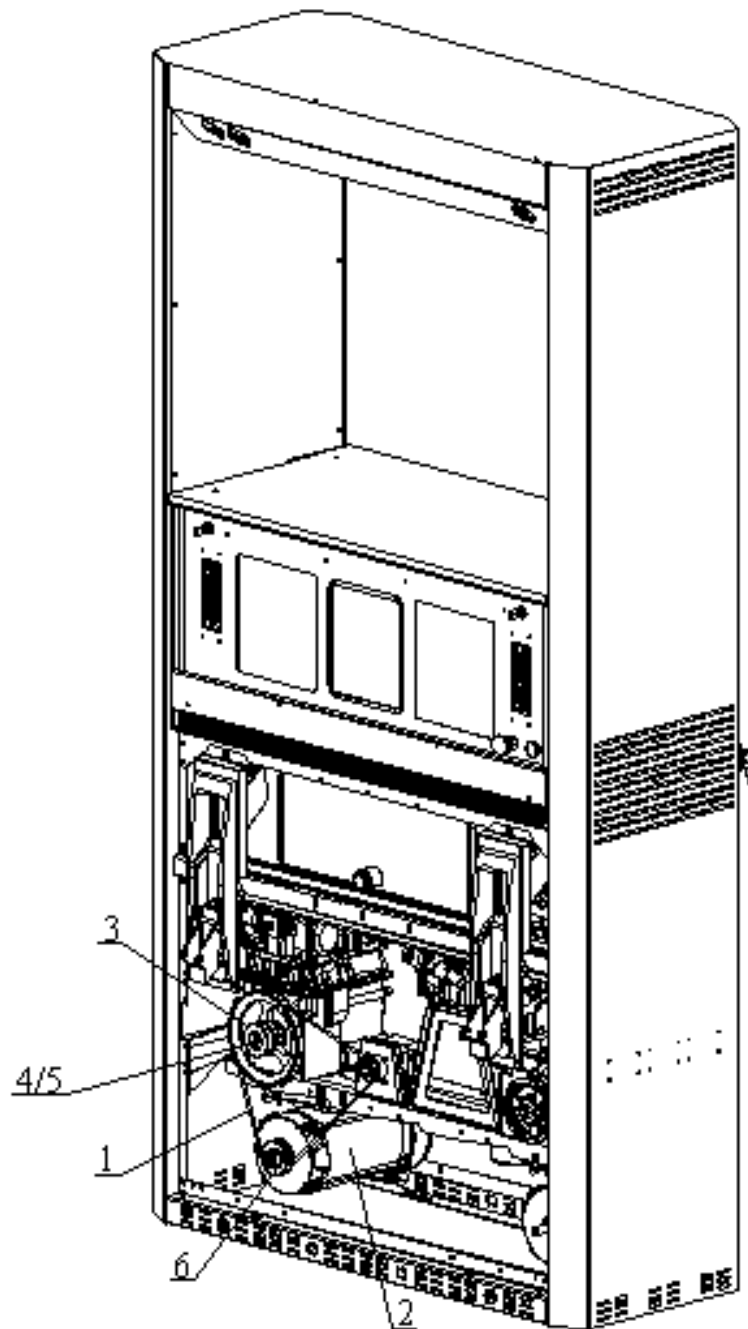
Nozzle



Blender adapter

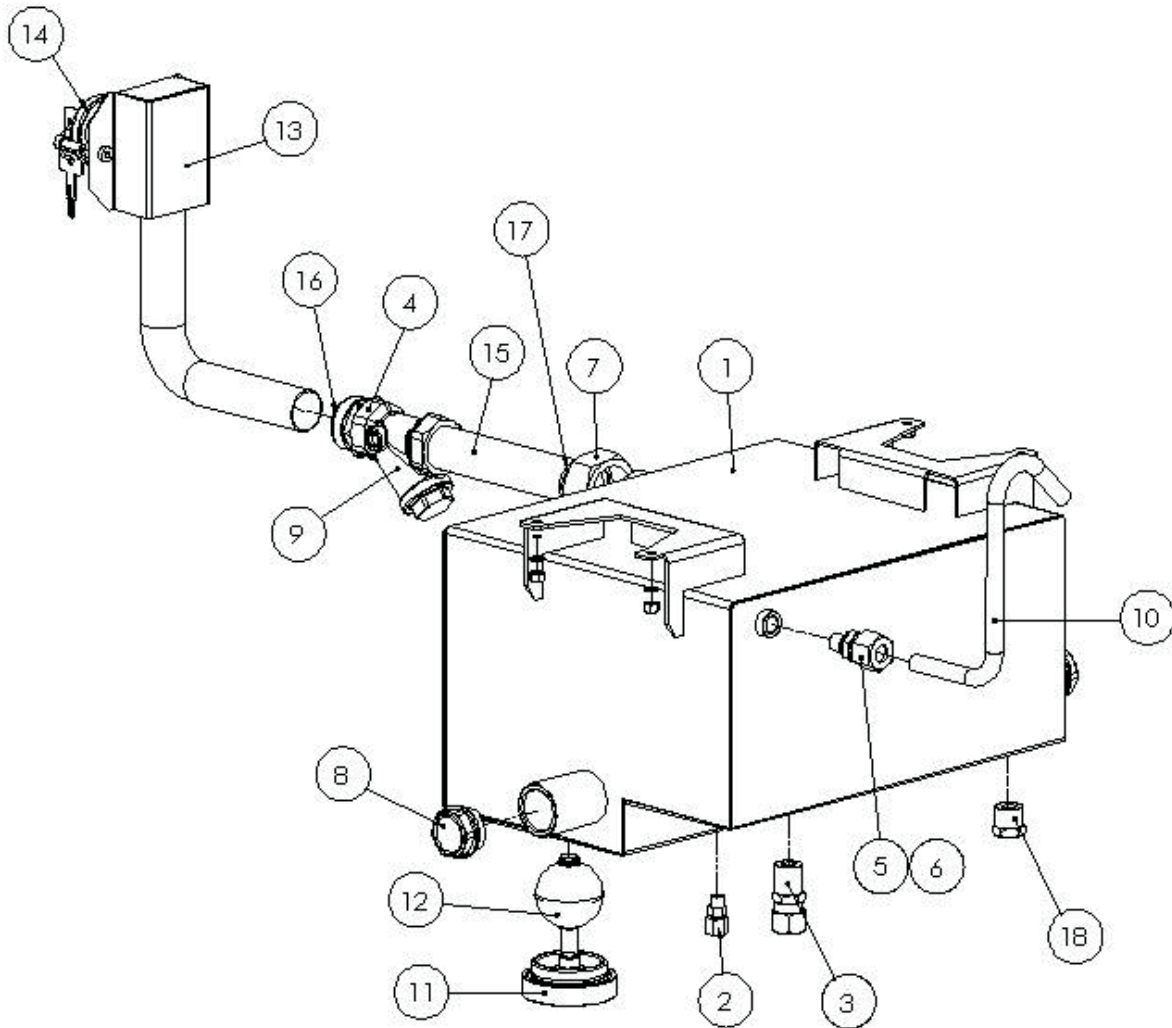
	Part number	Description
1		With cover, without VR
	940200435000	19 mm, spout ID = 16 mm / OD = 21 mm, black
	940200435002	19 mm, spout ID = 16 mm / OD = 21 mm, blue
	940200435004	19 mm, spout ID = 16 mm / OD = 21 mm, green
	940200435001	19 mm, spout ID = 16 mm / OD = 21 mm, red
	940200435005	19 mm, spout ID = 16 mm / OD = 21 mm, yellow
1		Without cover
	940200435	ZVA, 19 mm, spout ID = 21 mm / OD = 25 mm
2		Blender adapter
	1-306414	Fuel/oil blender adapter

9 Motor



	Part number	Description
1	BA9744	Micro V-belt
2	7-306507	Motor, 3-phase, 1,1 kW, 380V, 50/60 Hz
3	WM16919-0002	Double channel pulley
4	115550	Key, Woodruff
5	511670	Hex nut
6	2-305111	Motor pulley

10 Oil Tank Module



	Part number	Description
1	BB1198	Oil tank
2	BA9684	Male union, return
3	BA9685	Male union, suction
4	BA9691	Male union, filter
5	BA9693	Male union, venting
6	BA9694	Gasket
7	BA9692	Hex nut
8	BA9689	Level sight
9	BA9690	Y filter
10	BB1595	Venting tube
11	WT1410	Flange for oil level switch
12	WT2592	Level switch
13	BB1598	Oil tank filling
14	WR580	Cap, oil tank
15	BA9650	Inlet tube
16	B916231	O-ring
17	BA9834	O-ring
18	BA9945	Cap

11 Cables List

For Wiring Diagram, see User's Manual WR000616

Item Number	Title
3-305340	Data cable
2-305339	Illumination feed cable
BA9155	Cable multi
WM003898-0004	Cable single
WM003896-0001	Cable single
BA9141	Motor feed cable
WM003731-0002	Cable multi (power supply cable)
WM003861-0002	Cable flat 16 position (intrinsic safe barrier to CPU)
WM003760-0004	Cable flat 10 position (totalizer cable)
B171365	Cable (pulser cable)
BA9414	Cable connection power for relay
BA94812	Dispenser sing cable
BA94801	Cable relay terminal to CPU
WM10815-0001	Ground cable
BA9153	Cable (emergency button)
BA9151	Cable (emergency button)
BA9152	Cable (emergency button)

12 Market & Service



More than a century of experience
Über 100 Jahre Erfahrung
Mer än 100 års erfarenhet
Более, чем столетний опыт работы



Wayne Dresser develops, manufactures and markets complete operative systems for fuel handling at service stations. Everything from development and design to efficient production and assembly of components is pursued under one roof.

Wayne Dresser entwickelt, produziert und vermarktet komplette funktionierende Systeme für die Abgabe von Kraftstoffen an Tankstellen. Von der Entwicklung über das Design bis zur Herstellung und Installation liefern wir alles aus einer Hand.

Wayne Dresser utvecklar, tillverkar och marknadsför kompletta operativa system för drivmedels-hantering på service-stationer. Under ett och samma tak ryms allt från utveckling och konstruktion till rationell tillverkning och sammansättning av komponenter.

Wayne Dresser разработывает, производит и продает совершенные оперативные системы для торговли топлива на станциях обслуживания. Все начиная от разработок и конструкции до эффективного производства и сборки компонентов происходит в пределах одного предприятия.

The operations of Wayne Dresser comprise four interacting parts:

- Equipment such as petrol pumps, payment terminals, point-of-sale terminals and service station operative systems.
- Software for recording and for internal communication at the station, as well as between the station and the Oil Company, banks and credit institutes.
- Project design with overall responsibility to the customer.
- Field service, technical support and supply of spare parts.

Die Niederlassungen von Wayne Dresser umfassen vier ineinander greifende Bereiche:

- Ausrüstungen wie Zapfsäulen, Zahlterminals, Kassenterminals und Tankstellensysteme
- Software für Registrierung und Kommunikation auf der Tankstelle u. zwischen Station und Mineralölfirma sowie Banken und Kreditinstituten.
- Projektgestaltung mit umfas-sender Verantwortlichkeit dem Kunden gegenüber.
- Service, technische Unterstützung und Lieferung von Ersatzteilen.

Verksamheten omfattar fyra samverkande delar:

- Utrustning som bensinpumpar, betalterminaler, butiksterminaler och stationsdatorer.
- Programvara för registrering och kommunikation internt på stationen samt mellan stationen och oljebolaget, banker och kreditinstitut.
- Projektering med totalansvar gentemot upp-dragsgivaren.
- Service på fältet, teknisk support och reserv-delsförsörjning.

Действия Wayne Dresser включают четыре взаимосвязанных направления:

- Оборудование, например, топливораздаточные колонки, платежные терминалы, терминалы точек продажи и системы управления АЗС.
- Программное обеспечение для регистрации и для внутренней связи на АЗС, а также между АЗС и нефтяной компанией, банками и институциями кредитов.
- Проектирование с полной ответственностью к клиенту.
- Обслуживание на местах, техническая поддержка и поставка запасных частей.

Wayne Dresser makes it easier for the motorist to fill up and make his motoring purchases, while effectively meeting the needs of the service station owner for operating supervision and for conforming to the demands of the authorities on measuring accuracy, minimising pollution and ensuring safety.

Wayne Dresser erleichtert dem Fahrer die Betankung und damit verbundene Einkäufe, unterstützt gleichzeitig den Stationär bei der übersichtlichen Führung seines Betriebes unter Berücksichtigung der behördlichen Vorschriften hinsichtlich Messgenauigkeit, Umwelt- und Sicherheitsauflagen.

Wayne Dresser gör det lättare för bilisten att tanka och handla. Samtidigt tillgodoses stationsägarens krav på en effektiv driftskontroll och myndighetskraven på måtnoggrannhet, miljövänlighet och driftssäkerhet.

Wayne Dresser упрощает процесс заправки и приобретения покупок при эффективном согласовании потребностей владельца АЗС для оперативного управления и для соблюдения требований государственных и метрологических служб, а также уменьшения загрязнения окружающей среды и обеспечения безопасности.

Headquarters

3814 Jarrett Way
Austin, TX 78728
Phone: +1 512.388.8311
Fax: +1 512.388.8302
www.wayne.com

Wayne Pignone

Deg Italia S.p.a.
Via Giovanni Piantanida,
12
50127 Florence ,Italy
Phone +39 055 3039 200
Fax +39 055 3039 007

Wayne Brazil

Estrada do Timbo
126-Bonsucesso
Rio de Janeiro, Brazil
Phone: +55-21-2598-7711
Fax: +55-21-2598-7860

Wayne China

1221 Dong Lu Road
Pudong, Shanghai 200135
China
Phone: +8 21-5899-3976
Fax: +8 21-5899-0974

Wayne Sweden

Limhamnsvägen 109
Box 30049
SE-200 61 Malmö Sweden
Phone: +46 40 360500
Fax: +46 40150381
www.wayne.se